



The Ultimate in Automotive Refinishing and Coatings

Click below



DURAFILAUTOTECH

DURAFIL.CA



Over 30k Followers on Instagram
100+ Testimonials
100K+ Impressions, Globally!
1000's of online sales, shipped QUICKLY!





SUPERIOR COATINGS FOR YOUR INDUSTRY

Durafil is a Canadian based manufacturer and distributor of automotive refinishing and industrial products.

Our specialty is coatings. Coatings for the automotive refinish and industrial sectors; from ***clearcoat systems to industrial topcoats***.

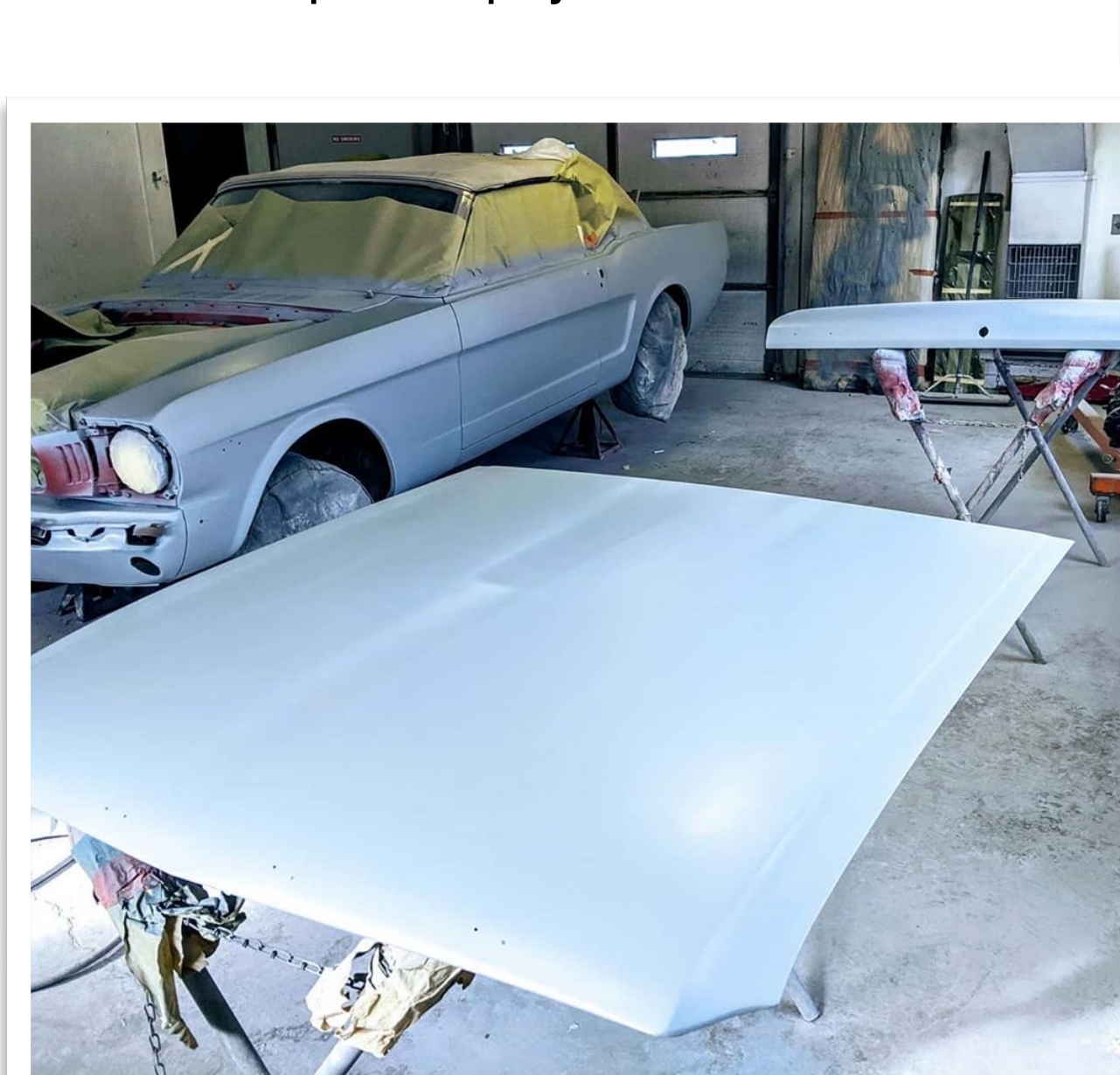
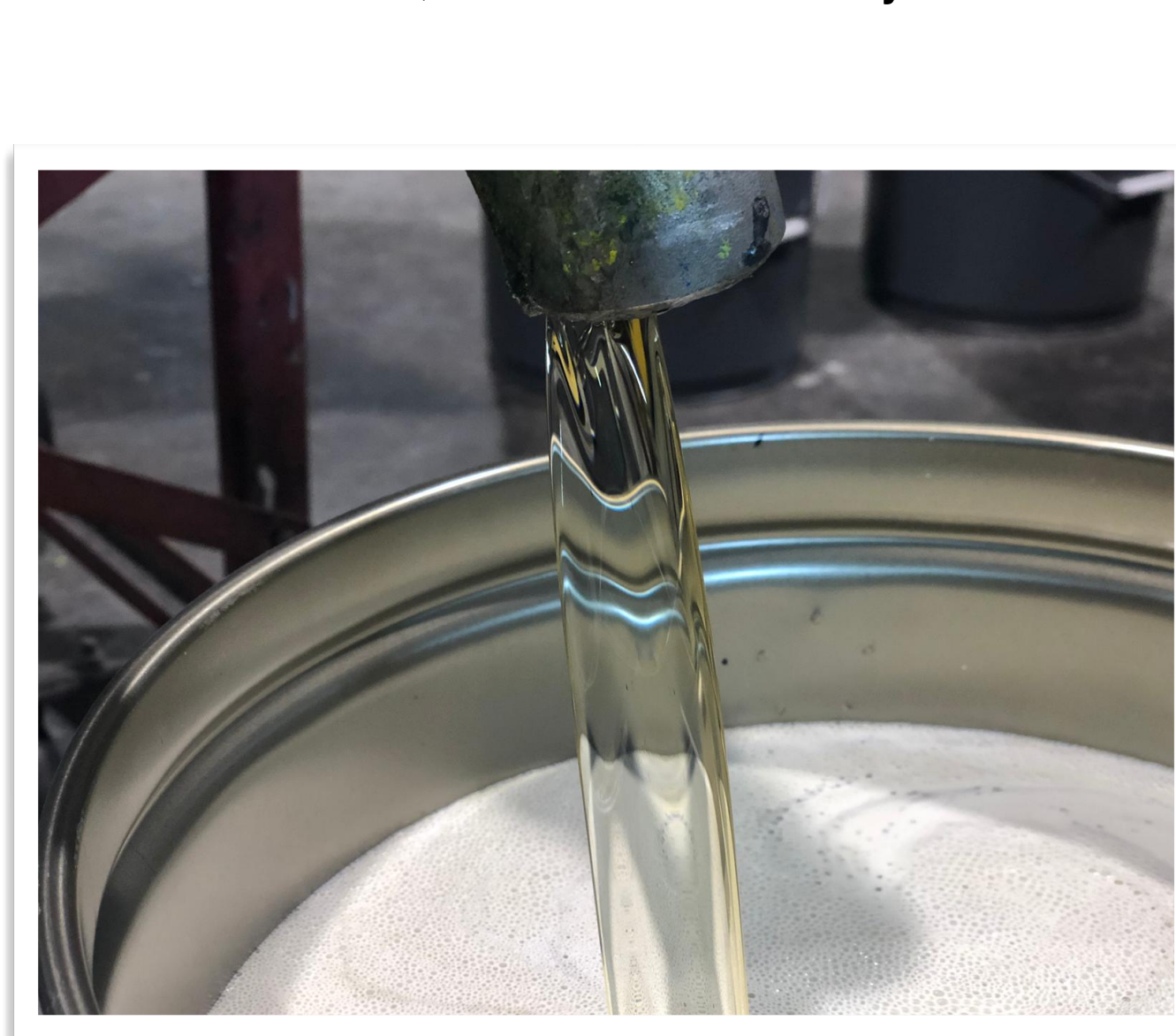
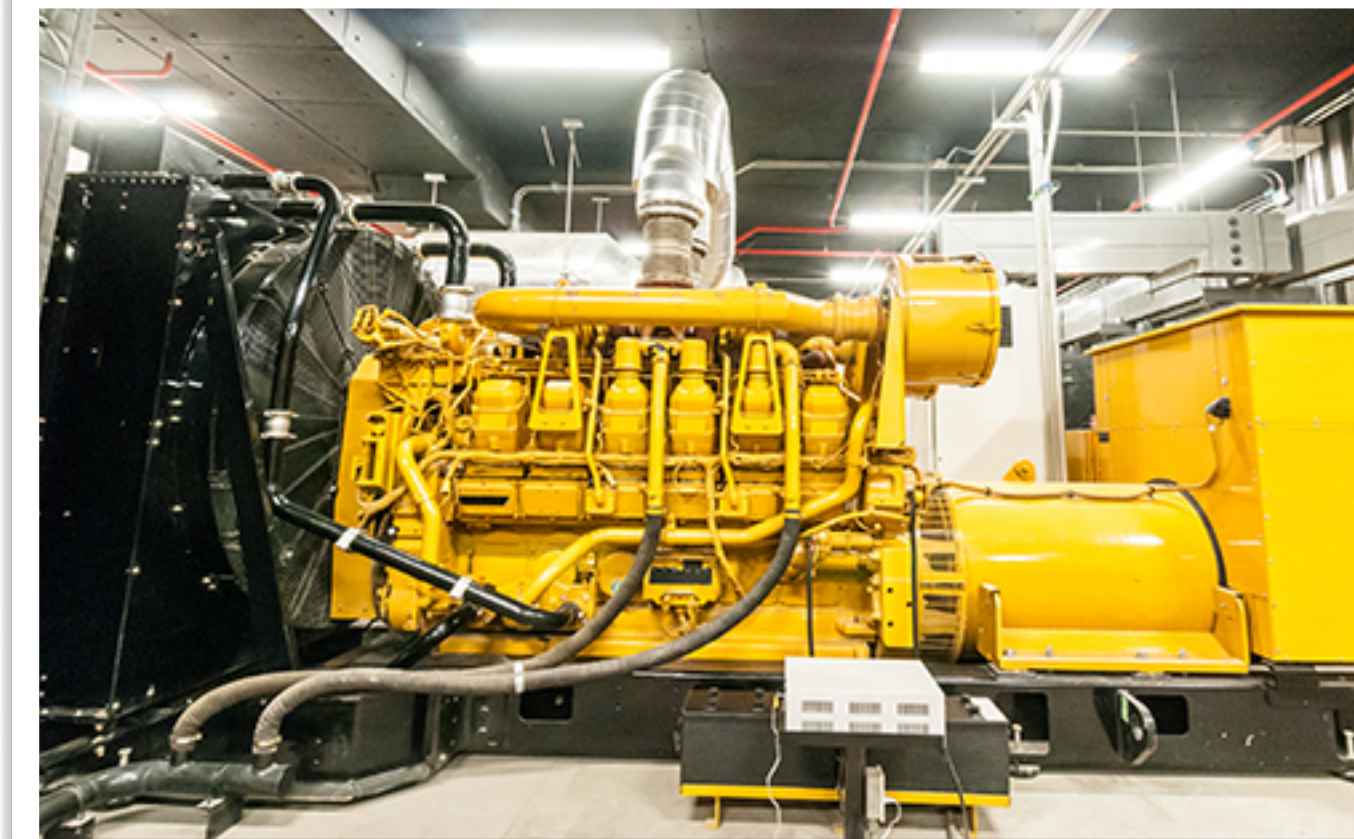
Our company is led by an experienced team of industry professionals, having well over 100 years of combined expertise. With this knowledge and over 40 years of “hands on” experience in the automotive repair industry, we know what customers want: premium quality, easy-to-use, fast cure, durable, high performance coatings; all at competitive pricing, while ***increasing their productivity, and reducing their labour and inventory costs***.

At Durafil this is what we deliver in every can;

The Ultimate Performance in automotive and industrial products at competitive prices.



Our entire product line was developed with the end user in mind, from application properties, to labour and utility costs. We’ve considered it all, and have carefully selected each premium component in every product with this philosophy in mind.





OUR VISION, MISSION, AND OBJECTIVE AS YOUR SUPPLIER

Our Objective is to build long term, loyal relationships within the industry. We recognize to achieve this we need to surpass expectations in quality, performance, technical support, and customer care. We take pride in knowing that our products are innovative and our team is attentive.

Our Vision of being a leading global supplier of superior coatings derives from our ability to have developed advanced industry products, alongside our superior technical service and training.

Our Mission is to provide automotive sectors, & refinishing and restoration shops with premium quality, ready to use, durable, high performance coatings; all at competitive pricing; while increasing productivity, and reducing labour and inventory costs.





MEETING THE LEGISLATIVE REQUIREMENTS

Amongst numerous performance properties - mainstream paints and coatings have been developed to meet the requisites towards environmental friendliness and user safety.

Energy consumption and VOC emissions are carefully observed. As global requirements are stringent, only the most capable manufacturers can follow this formality; while maintaining performance and quality.

Ongoing research and development of our automotive coatings is a key factor in our labs. Our goal here is to maintain technology with Low VOC, uniform colour, transparency and gloss, anti-corrosion, adhesion, and ageing properties.

As a result of Durafil's leading chemists, engineers, and combined expertise; we are proud to provide a range of best-in-class automotive refinishing products and coatings.





GLOSS-FIL C9800 HIGH PERFORMANCE URETHANE CLEARCOAT

GLOSS-FIL C9800

HIGH PERFORMANCE URETHANE CLEARCOAT

GLOSS-FIL C-9800 is Durafil's high performance clearcoat - containing a high solid content of **48-50%**. This clear provides an ultra high gloss, and is designed for overall repair and restoration on luxury vehicles. This clear is a dream to cut and buff!

Featured Specifications Of Our Gloss-Fil Urethane Clearcoat

- ❖ **CLEAR LIQUID APPEARANCE**
- ❖ **2-3 COATS TO APPLY, MIX RATION 4:1**
- ❖ **MANDATORY 10% R-123 SLOW REDUCER**
- ❖ **CHOICE OF AIR DRY OR FORCE DRY**
- ❖ **TO BE USED OVER SOLVENT OR WATER BASE, BASE COAT PAINTS**
- ❖ **LOW TRAVELLING OVERSPRAY**
- ❖ **DURABLE, LONG LASTING HIGH GLOSS FINISH**
- ❖ **EASY TO APPLY WITH VARIOUS INDUSTRIAL SPRAY EQUIPMENT**
- ❖ **GLOBAL LOW VOC COMPLIANT**
- ❖ **MADE WITH PREMIUM QUALITY RAW MATERIALS**
- ❖ **OEM FINISH, RICH HIGH GLOSS**
- ❖ **SUPERIOR POT LIFE**



Air Dry 21C/70F
12 Hours/Overnight

Force Dry 60C/140F
30 Minutes

Flash Time 21C/70F
10 Minutes In-between coats

Pot Life
3 Hours @ 21C / 70F



C-9800 CLEARCOAT: 3.78 L / 1 US GALLON
H-9803 SLOW HARDENER: 0.946 L / 1 US QUART

[CLICK TO VIEW PDS](#)



CLEAR-FIL C7700 OVERALL PERFORMANCE URETHANE CLEARCOAT

CLEAR-FIL C7700

OVERALL PERFORMANCE URETHANE CLEARCOAT

CLEAR-FIL C7700 Overall Performance Urethane clearcoat is a unique LOW VOC formulation ideal for day-to-day multi-panel and overall repairs. This clear coat will deliver a rich, durable long-lasting, high gloss finish with exceptional DOI every time!

Featured Specifications Of Our Clear-Fil Urethane Clearcoat

- ❖ **CLEAR LIQUID APPEARANCE**
- ❖ **2-3 COATS TO APPLY, MIX RATION 4:1**
- ❖ **NO SOLVENT POPPING**
- ❖ **NO SHRINKAGE**
- ❖ **TO BE USED OVER SOLVENT OR WATER BASE, BASE COAT PAINTS**
- ❖ **NO YELLOWING**
- ❖ **NO DIEBACK**
- ❖ **EASY TO APPLY WITH VARIOUS INDUSTRIAL SPRAY EQUIPMENT**
- ❖ **GLOBAL LOW VOC COMPLIANT**
- ❖ **MADE WITH PREMIUM QUALITY RAW MATERIALS**
- ❖ **OEM FINISH, RICH HIGH GLOSS**
- ❖ **SUPERIOR POT LIFE**
- ❖ **EXTREMELY EASY TO CUT AND BUFF**



Air Dry 21C/70F
2.5 Hours

Force Dry 60C/140F
30 Minutes

Flash Time 21C/70F
5 to 10 Minutes In-between coats

Pot Life
2 - 2 1/2 Hours @ 21C / 70F

C-7700 CLEARCOAT: 3.78 L / 1 US GALLON
H-7702 MEDIUM, H-7703 SLOW HARDENER:
0.946 L / 1 US QUART

[CLICK TO VIEW PDS](#)



TURBO-FIL C9500 FAST DRY URETHANE CLEARCOAT

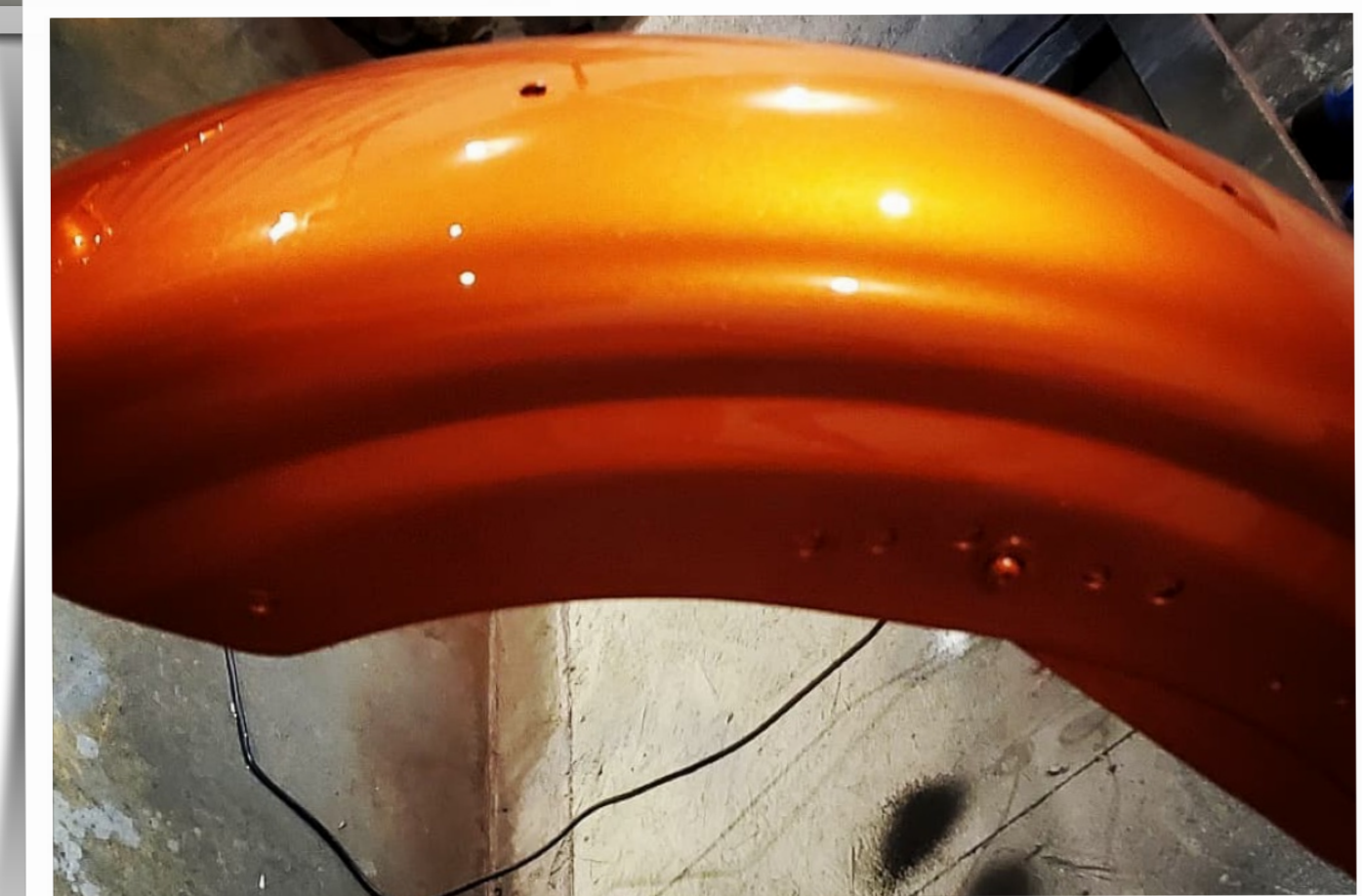
TURBO-FIL C9500

FAST DRY URETHANE CLEARCOAT

TURBO-FIL C-9500 is a high performance, Low VOC Fast Dry Urethane Clearcoat. This ultra fast dry, two component clearcoat should be your choice of clear for the day-to-day spot and panel repairs. The C-9500 is ideal for those small repair surfaces when speed is what you need ... fast cure and tape times. No waiting required between coats for this clearcoat ... apply wet-on-wet. C-9500 will deliver a rich, high gloss, durable, long-lasting finish with exceptional DOI every time!

Featured Specifications Of Our Turbo-Fil Fast Dry Clearcoat

- ❖ **CLEAR LIQUID APPEARANCE**
- ❖ **2-3 COATS TO APPLY, MIX RATION 4:1**
- ❖ **WET ON WET APPLICATION, EXTREMELY EASY TO BUFF**
- ❖ **NO SOLVENT POPPING**
- ❖ **TO BE USED OVER SOLVENT OR WATER BASE, BASE COAT PAINTS**
- ❖ **NO DIEBACK**
- ❖ **DURABLE, LONG LASTING HIGH GLOSS FINISH**
- ❖ **NO YELLOWING**
- ❖ **GLOBAL LOW VOC COMPLIANT**
- ❖ **MADE WITH PREMIUM QUALITY RAW MATERIALS**
- ❖ **OEM FINISH, RICH HIGH GLOSS**
- ❖ **SUPERIOR POT LIFE**



Air Dry 21C/70F
1 1/2 - 2 Hours

Force Dry 60C/140F
10 - 15 Minutes

Flash Time 21C/70F
No Flash Time
Wet on Wet Application

Pot Life
1 1/2 - 2 Hours @ 21C / 70F

C-7700 CLEARCOAT: 3.78 L / 1 US GALLON
H-9501 FAST HARDENER: 0.946 L / 1 US QUART

[CLICK TO VIEW PDS](#)



PRIME-FIL P-850 IIK URETHANE PRIMER

PRIME-FIL P850 IIK URETHANE PRIMER

PRIME-FIL P850 is a premium, Low VOC IIK Urethane Primer that has been formulated with premium ingredients to provide you with the ultimate in performance.

P850 is a high solids, two component system designed to deliver a high film build, superior adhesion, application, levelling, and sanding properties. This easy to use urethane primer also provides excellent weather and corrosion resistance properties.

P850 will adhere to properly prepared bare metal, galvanized steel, aluminum, plastic, sanded original finishes, and fiberglass.

P850 is designed to offer excellent sag resistance and feather edging properties, resulting in a smooth, durable finish. It can be top coated with any manufacturers' topcoat paint system.

You have a choice of three speeds of Reducers, R-121/R-122/R-123 to meet your speed of dry requirements.

Featured Specifications Of Our Prime-Fil Urethane Primer

- ❖ SUPERIOR FILM BUILD
- ❖ REDUCED SANDPAPER COSTS
- ❖ REDUCED LABOUR COSTS
- ❖ NO CLOGGING SANDPAPER
- ❖ EXCELLENT COVERAGE
- ❖ SUPER ADHESHION PROPERTIES
- ❖ EASY TO SAND
- ❖ CAN BE USED AS A SEALER



As a Primer:

4 Parts by Volume

1 Part by Volume

Optional, Up to 10%

Mix Ratio

P850 PRIME-FIL Urethane Primer

H-853 PRIME-FIL Hardener

R-121/R-122/R-123 Reducer

As a Sealer:

4 Parts by Volume

1 Part by Volume

1 Part by Volume

P850 PRIME-FIL Urethane Primer

H-853 PRIME-FIL Hardener

R-121/R-122/R-123 Reducer

Air Dry 25C/78F

1.5 Hours

Force Dry 60C/140F

30 Minutes From Cooling

No sanding required when P850 is used as a Sealer. Allow 40 - 45 minutes at 25°C/78°F prior to applying topcoat.

Flash Time 21C / 70F

No Flash Time

Wet On Wet Application

Pot Life

1.5 - 2 Hours @ 20C / 68F



P850 PRIMER: 3.78 L / 1 US GALLON
H-853 HARDENER: 0.946 L / 1 US QUART

[CLICK TO VIEW PDS](#)



SEAL-FIL SLR-200 TRANSPARENT URETHANE SEALER

SEAL-FIL SLR-200 TRANSPARENT URETHANE SEALER

SEAL-FIL is a unique Low VOC, premium quality, non-sanding, 2K Transparent Urethane Sealer. It can be applied over cured IK and IIK primers, single stage and basecoat/clearcoat topcoat systems.

SLR-200 sealer virtually eliminates common problems such as mapping, stains, discolouration, sinkage, and bleed-through caused by the coats below it. This unique sealer is designed to bind the ground and topcoat.

SLR-200 improves levelling resulting in a consistently smooth and uniform topcoat finish, most noticeable when using expensive metallic topcoats. The unique formulation of the SEAL-FIL SLR-200 will reduce the amount of time required to prepare the surface for top coating, reduce the amount of topcoat and abrasives typically required, and will even fill minor surface defects over 500 grit scuff marks!



Approved Substrates:

On ***properly prepared*** and cured IK and IIK primers, basecoat/clearcoat and single stage paint finishes.

Dry Time:

Wait approximately 10 - 15 minutes at 21°C / 70° F until the sealer applied is ***completely dry to the touch prior*** to applying the topcoat.

Flash Time 21C/70F

5 - 10 Minutes In-between coats

Pot Life

6 Hours Minimum @ 21C / 70F

SLR-200 SEALER: 3.78 L / 1 US GALLON

H-201 HARDENER: 0.946 L / 1 US QUART

[CLICK TO VIEW PDS](#)





CHROMA-FIL SINGLE-STAGE DTM URETHANE TOP COAT PAINT

CHROMA-FIL

SINGLE-STAGE DTM URETHANE TOP COAT PAINT

The UP-8500 Urethane Paint is a premium quality, LOW VOC line formulated to provide the ultimate performance that would be expected for a urethane topcoat.

This system has been designed to withstand aggressive environments, offering excellent resistance to weathering/ pollution, corrosive materials, impact, and abrasion.

With an outstanding gloss, and OEM Finish this topcoat single-stage paint can be formulated in over 1000 solid OEM, RAL and Industrial Color Chart system colors.

Featured Specifications Of Our Chroma-Fil Single Stage DTM Urethane Paint

- ❖ HIGH PERFORMANCE URETHANE PAINT
- ❖ RICH, HIGH GLOSS AUTOMOTIVE OEM FINISH
- ❖ EXCEPTIONAL HIDING PROPERTIES, RESULTING IN A MINIMUM OF 20% SAVINGS ON YOUR MATERIAL
- ❖ SUPERIOR ADHESION STRENGTH AND LIFELINE STABILITY
- ❖ TAILOR MADE, CUSTOMIZED, DRYING TO MEET YOUR FACILITIES REQUIREMENTS
- ❖ DTM AND NO CLEARCOAT REQUIRED. THIS SINGLE STAGE PAINT CAN BE CUT & BUFFED FLAWLESSLY
- ❖ USED FOR APPLICATIONS WITH HIGH CORROSION PROTECTION REQUIREMENTS
- ❖ EASY TO APPLY & USER FRIENDLY WITH ALL INDUSTRIAL AND AUTOMOTIVE SPRAY EQUIPMENT
- ❖ GLOBAL VOC COMPLIANCY
- ❖ MADE WITH PREMIUM QUALITY RAW MATERIALS
- ❖ EXCELLENT FLOW AND APPLICATION PROPERTIES
- ❖ SUPERIOR POT LIFE



Air Dry 21C/70F

Dust Free 20-30 Minutes*

Dry 3-4 Hours

Dry To Polish 12 Hours/Overnight

Force Dry 60C/140F

Dry 20-30 Minutes

Dry To Polish 1-1.5 hours after cooling

Pot Life

2.5 - 3 Hours @ 21C/70F

UP-8500 CHROMA-FIL PAINT:

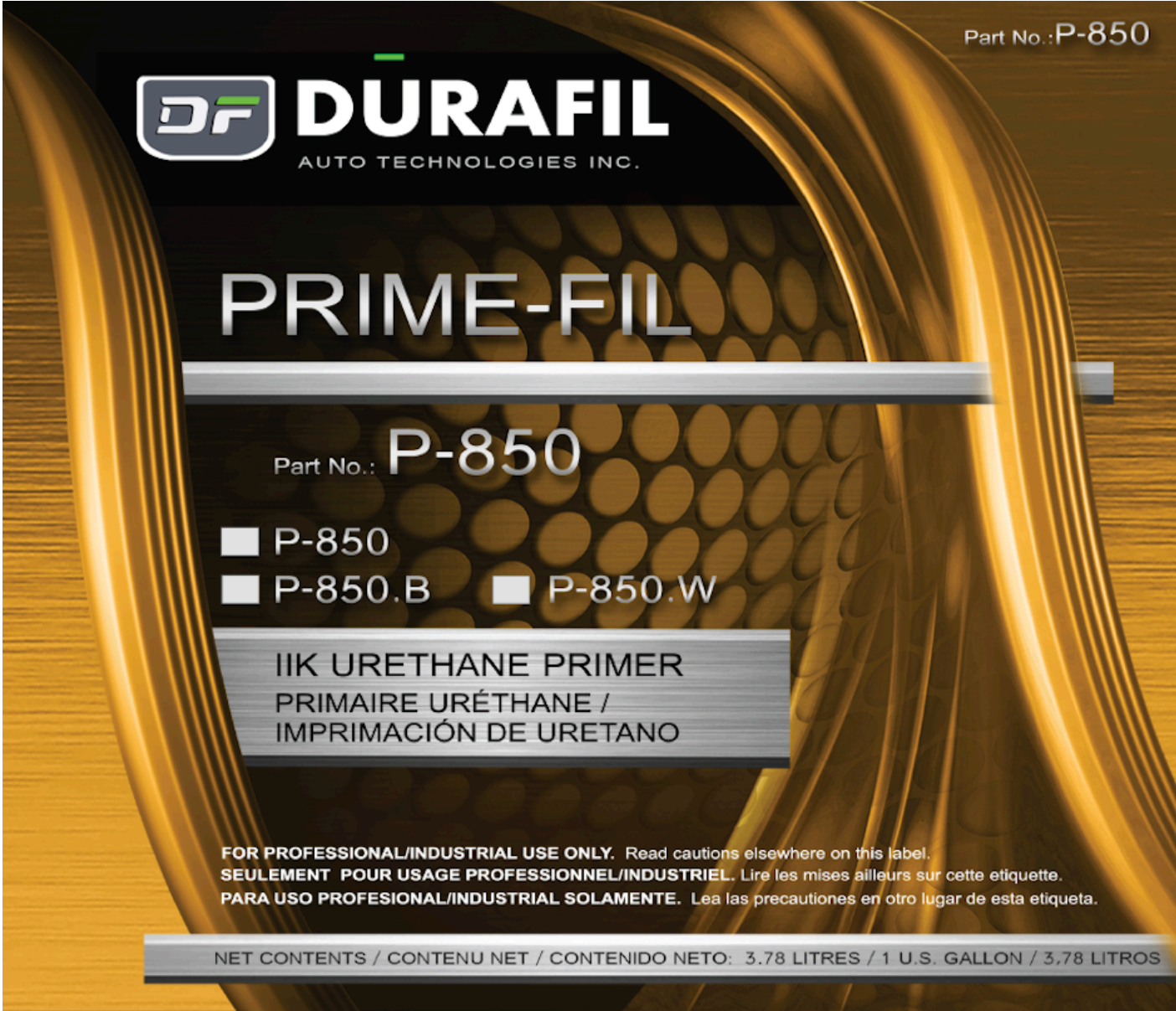
0.946 L / 1 US QUART

3.78 L / 1 US GALLON

H-8501/02/03 HARDENER: 0.946 L / 1 US QUART



PRIMERS



DRY TO SAND TIME:



Air Dry (at 25°C / 78°F) : 2 ½ - 3 Hours
Force Dry (at 60°C / 140° F) : 20 - 30 Minutes from cooling

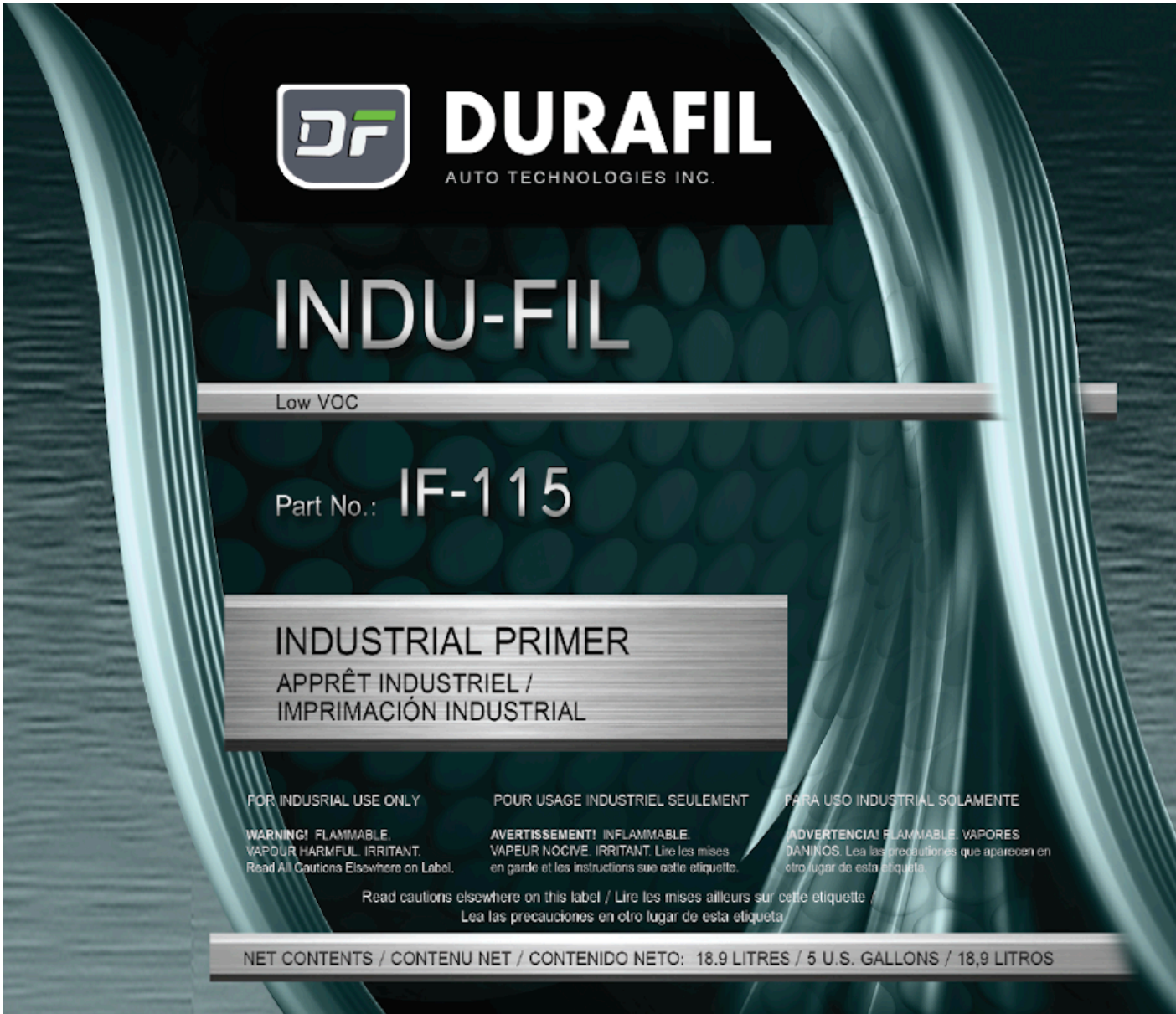
No sanding required when **P850** is used as a Sealer. Allow 40 - 45 minutes at 25°C/78°F prior to applying topcoat.

TECHNICAL INFORMATION:

Appearance:	Gray Liquid
Weight Per Gallon:	4.85 kg - 5.28 kg / 10.69 lbs - 11.63 lbs
% Solids By Weight:	62 ± 2
Specific Gravity:	1.282 - 1.394
Sand Time, Force Dry:	20 - 30 Minutes
Sand Time, Air Dry:	2 ½ - 3 Hours @ 25° C / 77° F
Pot Life:	2 - 2½ Hours @ 20° C / 68° F
Mix Ratio:	4 : 1 as a Primer, 4 : 1: 1 as a Sealer
Required Catalyst:	H-853 PRIME-FIL Hardener
Reducer:	R-121/R-122/R-123

Available Packaging Units
3.78 L / 1 US GALLON 18.9 L / 5 US GALLONS 50.0 L / 1 US DRUM

[CLICK TO VIEW PDS](#)



DRY TIME:



Dry Time @ 21 °C / 70 °F, with 50% Relative Humidity

Dry To Touch: 15 - 20 Minutes
Tack Free: 25 - 30 Minutes
To Recoat: 30 Minutes
Hard: 24 Hours

TECHNICAL INFORMATION:

Appearance:	Gray Liquid
Finish:	Low Gloss
% Solids By Weight:	46 ± 5
Specific Gravity:	1.18 - 1.26
Salt Spray Test (ASTM B117):	150 Hours
Pot Life:	Not Applicable
Mix Ratio, by Volume:	4 Parts IF-115 : 1 Part Reducer

Available Packaging Units
3.78 L / 1 US GALLON 18.9 L / 5 US GALLONS 50.0 L / 1 US DRUM

[CLICK TO VIEW PDS](#)



PRIMERS



DRY TO SAND TIME:



No sanding required. Must sand only if 72 hours have lapsed since application of **EP.120/EP.120.B/EP-120.W.**

TECHNICAL INFORMATION:

Appearance:	Gray, Black or White Liquid
Weight Per Gallon:	5.29 kg - 5.48 kg / 11.66 lbs - 12.08 lbs
% Solids By Weight:	71 ± 3
Specific Gravity:	1.397 - 1.447
Sand Time, If Required:	Required only if 72 hours have lapsed from application
Pot Life:	8 Hours @ 20° C / 68° F
Mix Ratio:	4 : 1 : 1
Required Catalyst:	H-122 Epoxy-FIL Catalyst
Reducer:	R-127 Epoxy-Fil Reducer

Available Packaging Units
3.78 L / 1 US GALLON 18.9 L / 5 US GALLONS 50.0 L / 1 US DRUM

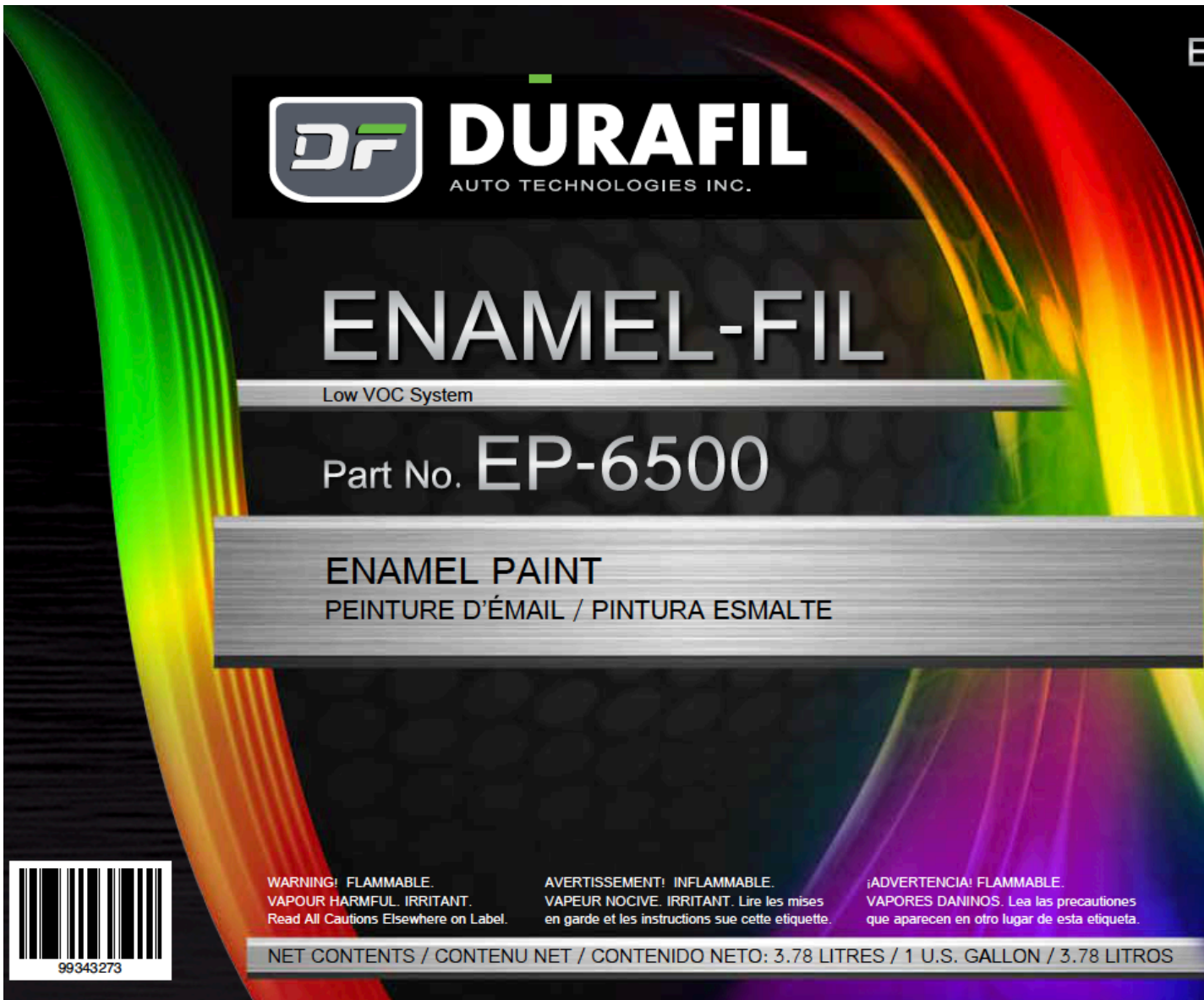


[CLICK TO VIEW PDS](#)

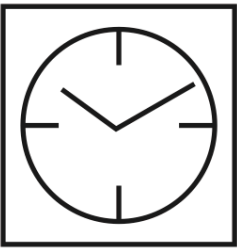


PAINTS

[CLICK TO VIEW PDS](#)



DRY TIME:



If desired, bake for 15 minutes at 60°C / 140° F.

Dust Free at 21°C/70°F: 20 - 30 Minutes

Force Dry at 60°C/140°F: 15 - 20 Minutes

Air Dry at 21°C/70°F: 3 - 4 Hours

TECHNICAL INFORMATION:

Appearance:	Coloured Liquid
Weight Per Gallon:	3.58 kg - 4.05 kg / 7.89 lbs - 8.93 lbs
Specific Gravity:	0.946 - 1.072
% Solids By Weight:	38 - 62
Coats To Apply:	2 - 3
Polt Life:	Not Applicable
Mix Ratio:	4 : 10%
Required Reducer:	R-121/R-122/R-123 Reducer

Available Packaging Units

3.78 L / 1 US GALLON 18.9 L / 5 US GALLONS 50.0 L / 1 US DRUM



DRY TIME:



Air Dry at 21°C / 70°F:

Dust Free	20 - 30 Minutes <i>* will vary per colour</i>
Dry	3 - 4 Hours <i>* will vary according to amount of material applied, temperature, and air flow</i>
Dry to Polish	12 Hours/Overnight

Before baking allow a 10 - 15 minute flash period at 21°C / 70°F after application of final coat. Bake for 30 - 45 minutes at 60°C / 140°F. Baking time will depend on amount of material applied. Let cool for 15 - 20 minutes before handling.

Force Dry at 60° C / 140°F:

Dry	20 - 30 Minutes
Dry to Polish	1 - 1 1/2 Hours after cooling

TECHNICAL INFORMATION:

Appearance:	Coloured Liquid
Weight Per Gallon:	3.73 kg - 4.77 kg / 8.22 lbs - 10.51 lbs
Specific Gravity:	0.986 - 1.260 @ 21°C/70°F
% Solids By Weight:	50 - 66
Coats To Apply:	2 - 3
Recommended Dry Film:	2 - 3 mils
Dust Free Time:	15 - 25 Minutes @ 21° C / 70° F <i>* will vary per colour</i>
Pot Life:	2 - 2½ Hours @ 21° C / 70° F
Mix Ratio:	4 : 1: 10%
Required Catalyst:	CHROMA-FIL H-8501/H-8502/ or H-8503 Hardener
Required Reducer:	R-121/R-122/ or R-123 Reducer

Available Packaging Units

3.78 L / 1 US GALLON 18.9 L / 5 US GALLONS 50.0 L / 1 US DRUM



PUTTIES & BODY FILLERS

[CLICK TO VIEW PDS](#)



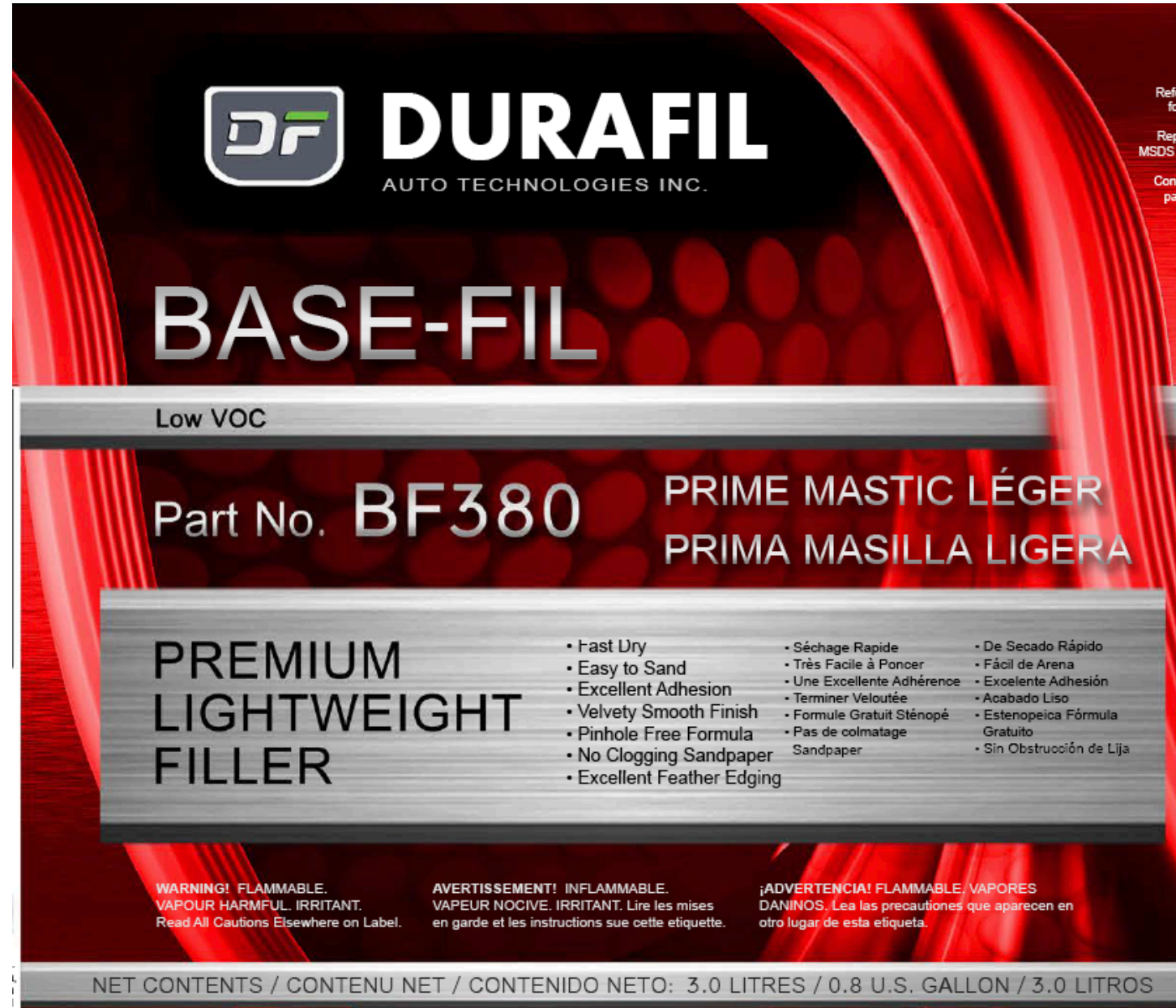
APPROVED SUBSTRATES: On properly prepared steel, galvanized steel, zinc coated steel, bare metal, aluminum, body filler, most rigid and semi-rigid fibreglass, SMC, and thoroughly cured topcoats.

**TECHNICAL
INFORMATION:**

Appearance:	White Paste
Weight Per Gallon:	4.12 kg 9.09 lbs Average
Solids by Weight:	82 ± 2
V.O.C. As Packaged:	210 g/L 1.75 lbs/gal
V.O.C. As Applied:	11 g/L 0.09 lbs/gal
Gel Time:	4 - 6 minutes @ 25° C / 77° F
Sand Time:	15 - 20 minutes @ 25° C / 77° F
Maximum Build Thickness:	3 mm (1/8")
Required Catalyst:	BPO (Benzoyl Peroxide) Cream Hardener
Mix Ratio:	2% By Weight or 50:1 BPO Cream Hardener

Available Packaging Units
1.5KG L / 3.3 LBS

[CLICK TO VIEW PDS](#)



APPROVED SUBSTRATES: On properly prepared steel, galvanized steel, zinc coated steel, bare metal, aluminum, SMC, and most rigid and semi-rigid fibreglass.

**TECHNICAL
INFORMATION:**

Appearance:	White Paste
Weight Per Gallon:	4.01 kg 8.84 lbs Average
Solids by Weight:	81 ± 2
V.O.C. As Packaged:	215 g/L 1.79 lbs/gal
V.O.C. As Applied:	18 g/L 0.15 lbs/gal
Gel Time:	4 - 6 minutes @ 25° C / 77° F
Maximum Build Thickness:	3 mm (1/8")
Sand Time:	15 - 20 minutes @ 25° C / 77° F
Required Catalyst:	BPO (Benzoyl Peroxide) Cream Hardener
Mix Ratio:	2% By Weight or 50:1 BPO Cream Hardener

Available Packaging Units
3.0 L / 0.8 US GALLON



BODY FILLERS

[CLICK TO VIEW PDS](#)

APPROVED SUBSTRATES: On properly prepared steel, galvanized steel, zinc coated steel, bare metal, aluminum, SMC, and most rigid and semi-rigid fibreglass.

**TECHNICAL
INFORMATION:**

Appearance:	Green Paste
Weight Per Gallon:	5.4 kg 11.9 lbs Average
Solids by Weight:	82 ± 2
V.O.C. As Packaged:	238 g/L 1.99 lbs/gal
V.O.C. As Applied:	24 g/L 0.20 lbs/gal
Gel Time:	5 - 6 minutes @ 25° C / 77° F
Sand Time:	15 - 20 minutes @ 25° C / 77° F
Maximum Build Thickness:	6 mm (1/4")
Required Catalyst:	BPO (Benzoyl Peroxide) Cream Hardener
Mix Ratio:	2% By Weight or 50:1 BPO Cream Hardener

Available Packaging Units
3.78 L / 1 US GALLON



[CLICK TO VIEW PDS](#)

APPROVED SUBSTRATES: On properly prepared steel, galvanized steel, bare metal, aluminum, zinc coated steel, most rigid and semi-rigid fibreglass, and SMC.

**TECHNICAL
INFORMATION:**

Appearance:	Light Gray Paste
Weight Per Gallon:	4.13 kg 9.10 lbs Average
Solids by Weight:	80 ± 2
V.O.C. As Packaged:	219 g/L 1.83 lbs/gal
V.O.C. As Applied:	16 g/L 0.13 lbs/gal
Gel Time:	4 - 6 minutes @ 25° C / 77° F
Sand Time:	15 - 20 minutes @ 25° C / 77° F
Maximum Build Thickness:	3 mm (1/8")
Required Catalyst:	BPO (Benzoyl Peroxide) Cream Hardener
Mix Ratio:	2% By Weight or 50:1 BPO Cream Hardener

Available Packaging Units
3.0 L / 0.8 US GALLON





ADHESION PROMOTERS

[CLICK TO VIEW PDS](#)

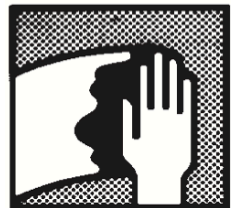


PLASTI-FIL PF-300 is a Low VOC non-sanding, fast drying 1K transparent Plastic Adhesion Promoter. It is ready-to-spray and has been formulated with chlorinated polyolefins and other premium ingredients to provide you with the ultimate in adhesion performance. **PF-300** is easy to apply and delivers excellent bonding power to various coatings and refinish materials commonly used in today's automotive industry. **PF-300** is designed to be used to repair all paintable plastic components on vehicles. It can be applied to properly cleaned and prepared interior and exterior plastics such as Polypropylene (PP), Polyethylene (PE), Thermoplastic Olefins (TPO), and other difficult to bond plastics. The unique properties of **PF-300** eliminates the need to sand unprimed plastic parts, and as such reduces labour costs associated with this stage of repair.

Available Packaging Units
0.946 L / 1 US QUART

APPROVED SUBSTRATES: On *properly cleaned and prepared* interior and exterior plastic automotive parts, such as Polypropylene (PP), Polyethylene (PE), Thermoplastic Olefins (TPO), and other plastics.

SURFACE PREPARATION:



Thoroughly wash surface with soap and water. Rinse well and dry with a clean cloth.

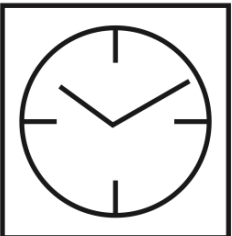


Scuff area using a gray scuff pad or lightly sand with 800 grit paper. Clean surface with **CF-125/125.5**, or **CF-130/130.5**. Wait approximately 5 minutes and then inspect plastic surface to ensure that the plastic is now **dull and does not feel slick to the touch**.

If the surface is not entirely de-glossed and feels slick, you must re-apply **CF-125** or **CF-130/130.5** and clean surface until the plastic is dull and does not feel slick to the touch.

Surface must be completely dry before applying **PF-300**.

DRY TIME:



Air Dry at 21°C / 70°F	20 - 30 Minutes	<i>*will vary according to amount of material applied, temperature, and air flow</i>
Force Dry at 60°C / 140°F	5 - 10 Minutes	

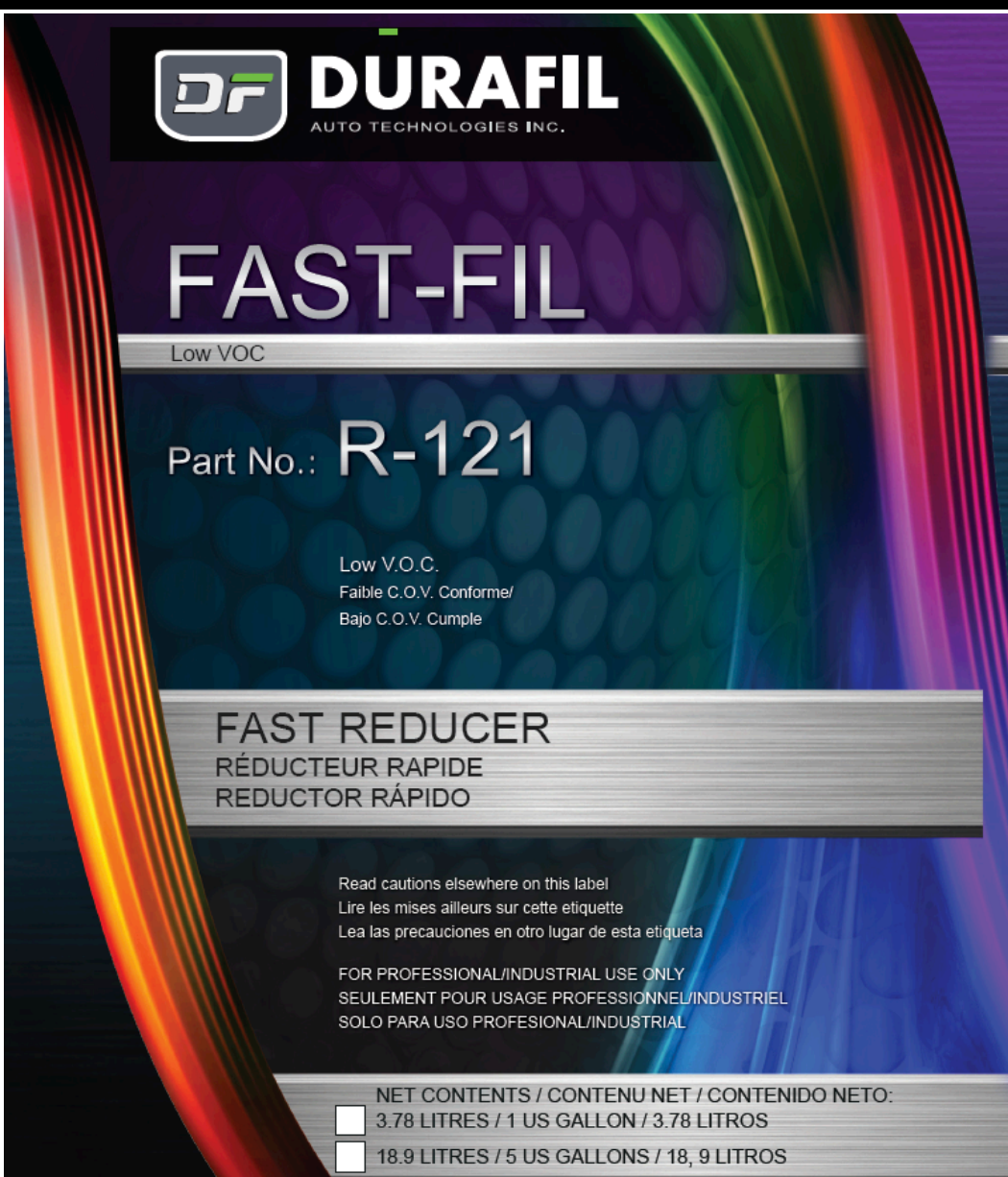
TECHNICAL INFORMATION:

Appearance:	Yellow Coloured Liquid
Weight Per Gallon:	3.29 kg - 3.32 kg / 7.26 lbs - 7.33 lbs (@ SG 0.870)
Specific Gravity:	0.864 - 0.879
% Solids by Weight:	7 ± 2
Coats To Apply:	2
Dry Time:	20 - 35 Minutes @ 21°C / 70°F
Pot Life:	Not Applicable
Mix Ratio:	None, PF-300 is Ready To Use



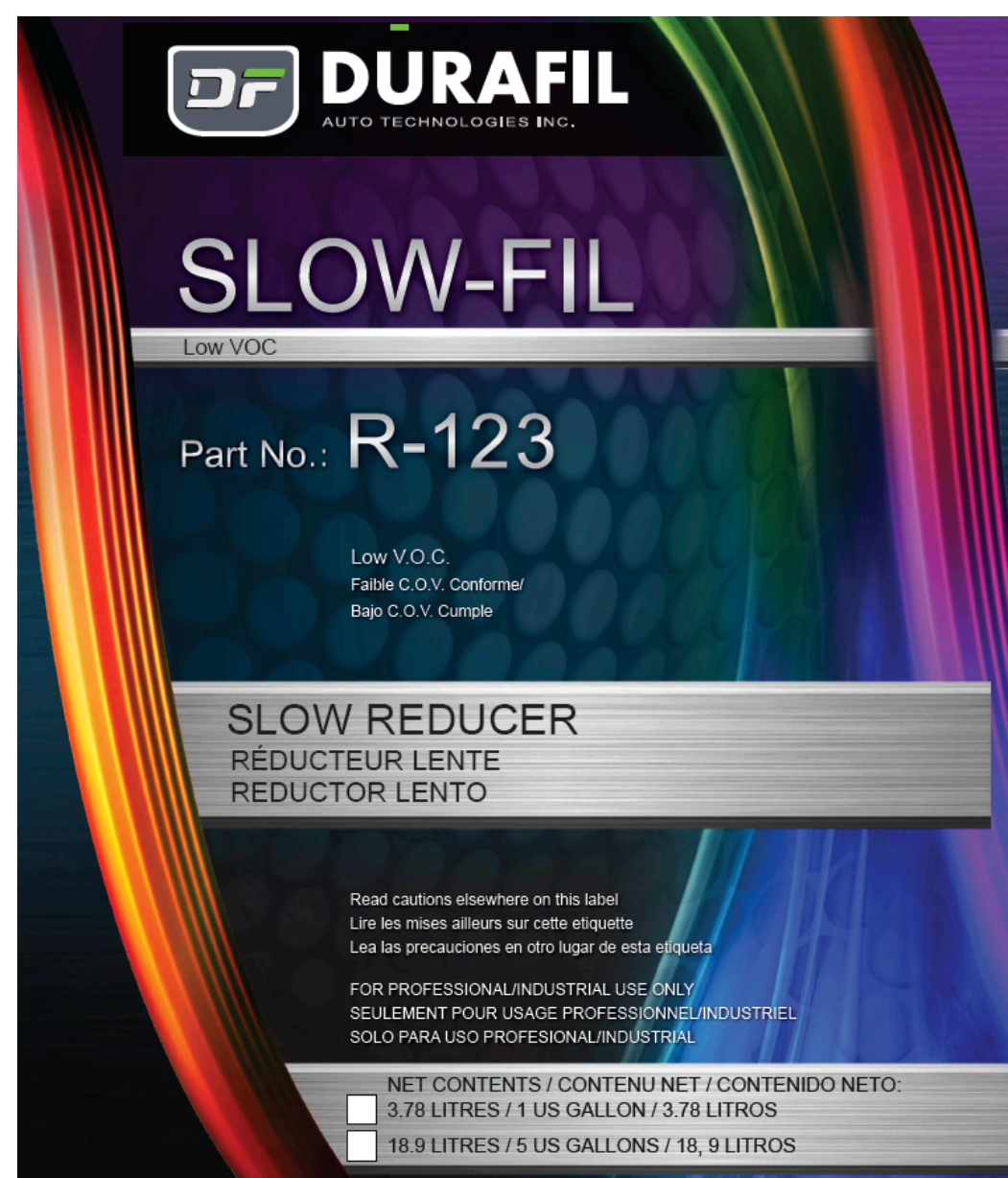
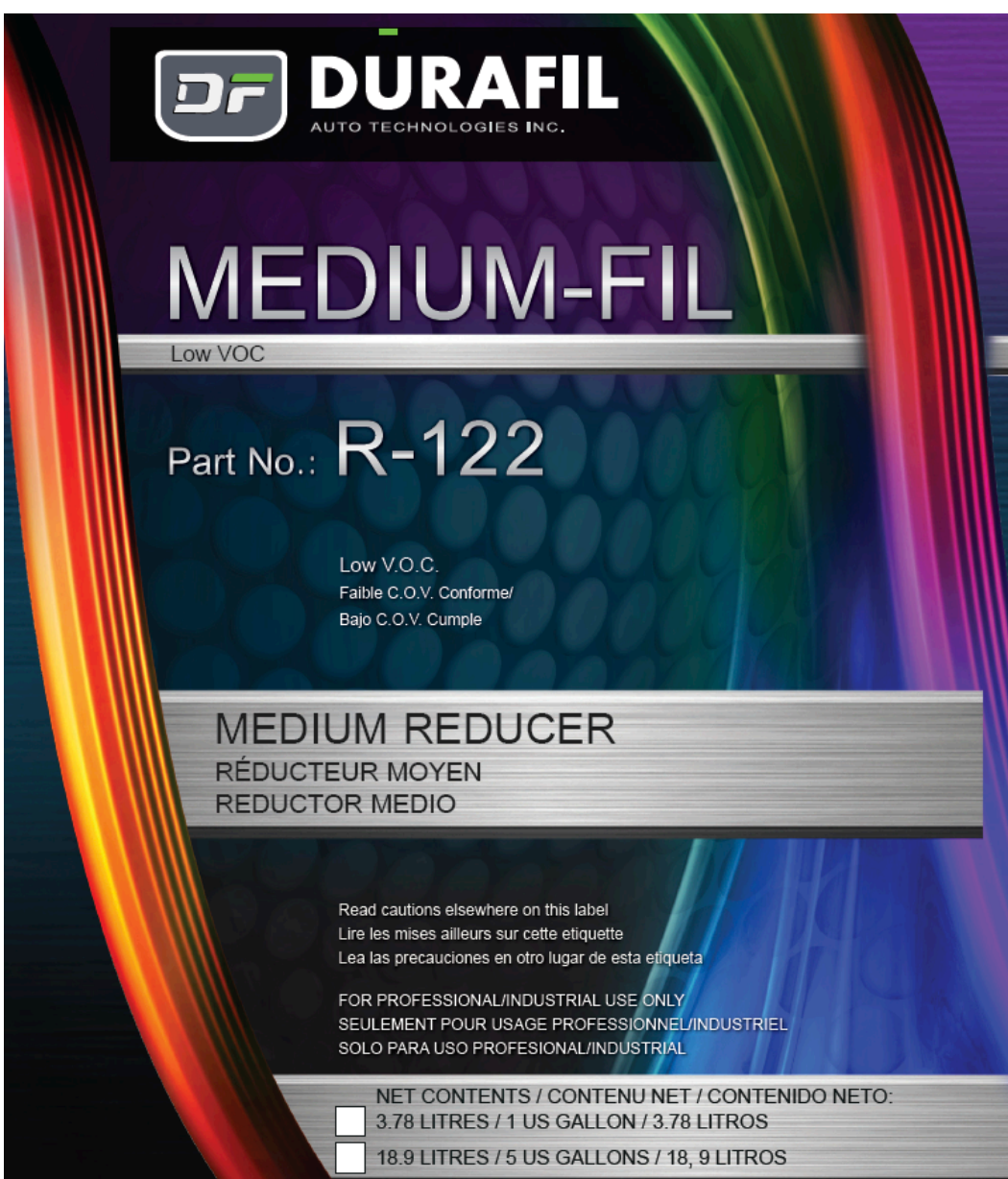
REDUCERS

[CLICK TO VIEW PDS](#)



FAST-FIL / MEDIUM-FIL / SLOW-FIL R-121 / R-122 / R-123

FAST, MEDIUM, & SLOW REDUCERS



FAST-FIL R-121 / MEDIUM-FIL R-122 / SLOW-FIL R-123 are Low VOC, 250 g/L or less, **Reducers** formulated to be used in all solvent based I/K urethane primers, urethane, acrylic enamel, and air dry enamel paint systems, basecoat paints, and clearcoats. These **Reducers** will provide you with the optimal spray viscosity, and flow properties necessary to extract the optimal performance from any solvent based system. You have a choice of three speeds of dry **Reducers** from Fast to Slow dry **R-121/R-122/R-123** to meet your speed of dry requirements. Select the appropriate speed of dry **Reducer** according to temperature and size of the repair surface to extract the optimum performance from any two component, Low VOC solventborne system.

Available Packaging Units

3.78 L / 1 US GALLON 18.9 L / 5 US GALLONS 50.0 L / 1 US DRUM



CLEANERS



CLEAN-FIL CF-125 Silicone & Wax Remover is a Low VOC cleaner fomulated to easily and quickly remove silicone, wax, oil, grease, and other residue and contaminants from surfaces to be refinished. **CF-125** can be applied to metal, painted, primed, plastic, and fiberglass surfaces. **CF-125** is designed to be used before and after sanding, to clean and remove residue from the surface to be refinished. **CF-125** must also be applied to clean the repair surface again before applying any ground or top coat, such as primer, paint, or sealer to remove any residue from surface .

APPROVED SUBSTRATES: On metal, cured primed and painted surfaces, plastic and fiberglass surfaces.

SURFACE PREPARATION:

Apply a liberal amount of **CF-125** to a clean, lint free cloth/rag. Rubbing briskly, wipe off oil, wax, grease, and other contaminants from the surface. It is recommended that cloths/ rags be changed frequently to prevent the spreading of residue and other contaminants. Wipe dry surface immediately after applying **CF-125**. Do not let **CF-125** air dry on panel.

In case of hard to remove residue, repeat the entire application using new, clean cloths until the surface is completely clean.

[CLICK TO VIEW PDS](#)

Available Packaging Units

3.78 L / 1 US GALLON 18.9 L / 5 US GALLONS 50.0 L / 1 US DRUM

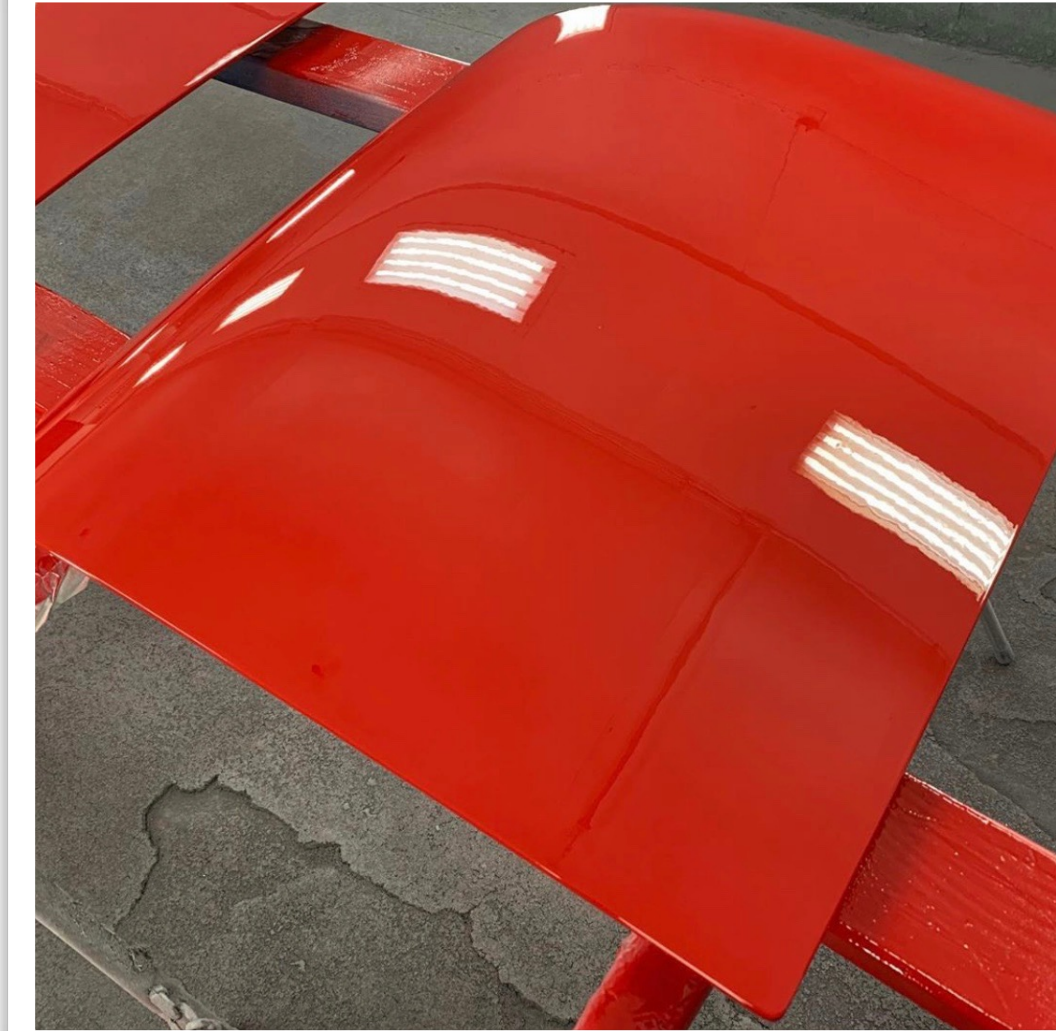


INDUSTRIES SERVICED BY DURAFIL AUTO TECHNOLOGIES

CUSTOM RESTORATION



COLLISION REPAIR



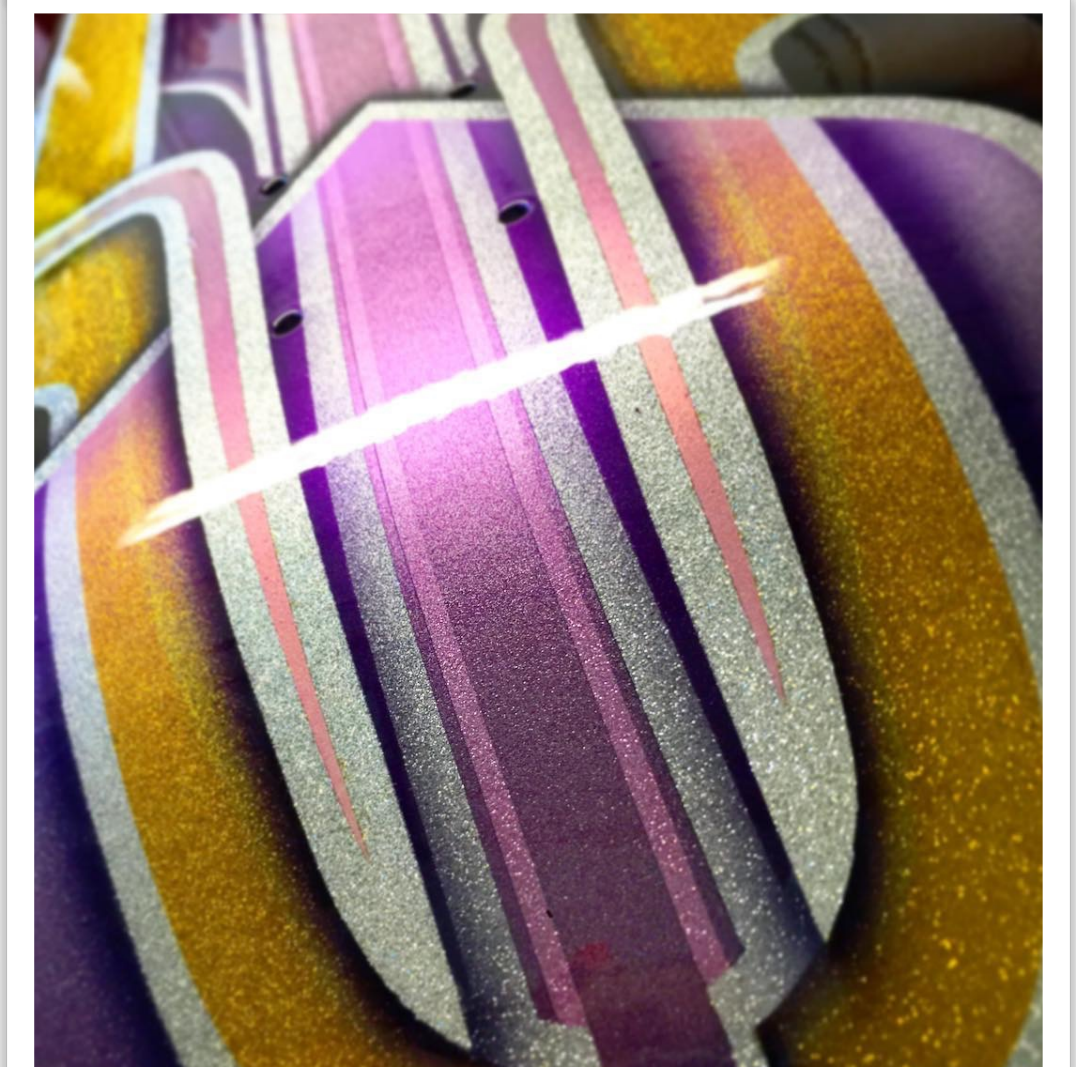
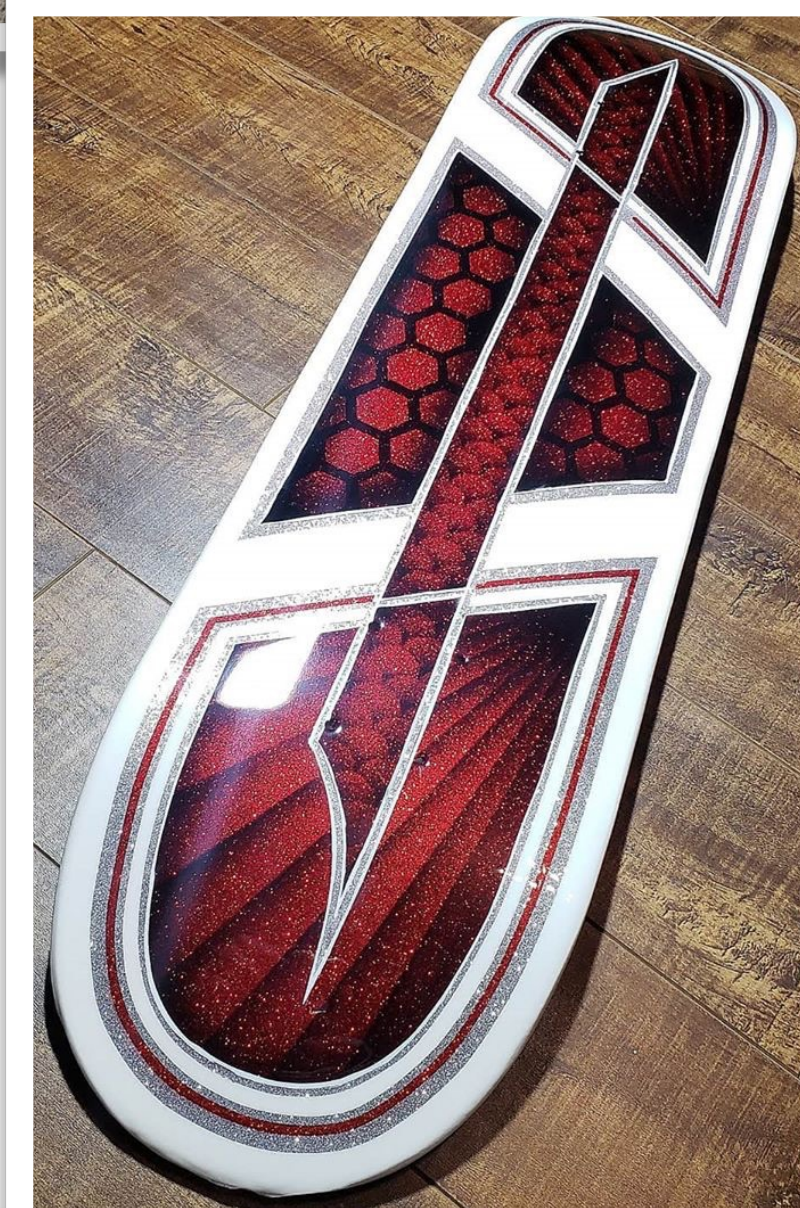
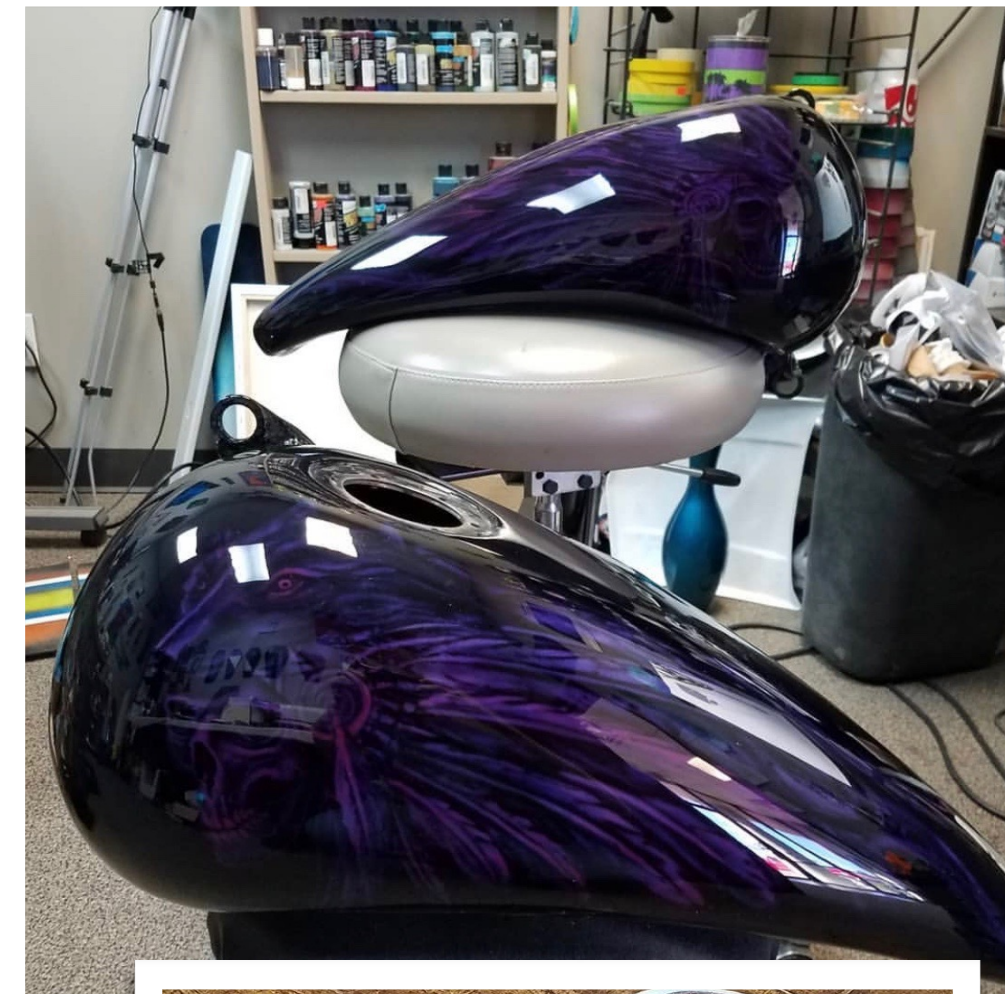


INDUSTRIES SERVICED BY DURAFIL AUTO TECHNOLOGIES

OEM



AIRBRUSH/PINSTRIPE ART MANUFACTURING





CONTACT US FOR YOUR INDUSTRIAL PAINT AND COATINGS NEEDS

Jim Fotopoulos
President

jim@durafil.ca

Sofia Lalos
Vice President

sofia@durafil.ca

Amelia Fotopoulos
International Business & Distribution

amelia@durafil.ca

Tyler Zacher-King
Sales, CANADA

sales@motivatedreps.com

AAFP LLC
Sales & Distribution, Las Vegas, NV, USA

amelia@durafil.ca

Ben Greenwood
Industrial Products & Solvents , UK

ben@sonsofguns.co.uk

Panagiotis Tzanetos
Sales, GREECE

jannetos@otenet.gr



Headquarters

1360 Blundell Road
Mississauga, Ontario L4Y 1M5
905-896-7171

www.durafil.ca
[Instagram @durafilautotech](#)